

Outline of the route

As a simple 'out and back' route, this walk links Hodnet and Wollerton via an unusual (glow worm) nature reserve; but via its 2nd part provides a circular country walk. It starts at Hodnet Social Club's car park (free parking).

Cross the Recreation Ground, then head down Station Road to the old railway bridge, where you join the route of the former Wellington to Market Drayton railway. Near the Wollerton end of the line you can spot* **glow worms**, the colony here being one of only two known in Shropshire.

* The best time to see them is after dark on June/July evenings, in the plants at the edge of the short (rabbit 'mown') grassland.

At other times you may see **buzzards** circling, hear **skylarks** singing or **curlews** calling. At the end of the line you can simply return, or take the footpath to Mill Road—by **Wollerton Old Hall Garden**. Here you can take a short detour to view an unusual old brick **Stray Animal Pound**.

To continue the walk, follow Mill Road to the bypass and cross it—take care. Quiet back lanes lead back to Hodnet, where you cross the bypass again and join Station Road. You can now return to the start or follow an optional leg down Webster Lane: in which case, at the end of the lane, cross the bypass and, in front of a farm, take the path to the right to Espley Roundabout. From there, return to the start via a footpath and the village's roadside pavements.

Welcome to Hodnet

This leaflet is one of a series intended to help visitors and residents walk some local paths, highlighting features of interest en-route. Some walks connect to others—see maps.

If visiting, please consider supporting some of our local businesses and visitor attractions see www.hodnet.org.uk for details. Details of other walks, and information on Hodnet Footpath Group, can be found at www.hodnet.org.uk/fpg

When out walking, may we remind you to:
Close gates after use
Not leave litter

Keep dogs on a lead near livestock, and clean up after them—dog faeces can spread diseases
(Dog bins at each end of the old Railway Line)

Produced with assistance from Shropshire Council and the Shropshire Housing Group Community Fund



Hodnet Walks : 1

Hodnet to Wollerton
'Glow Worm Walk'

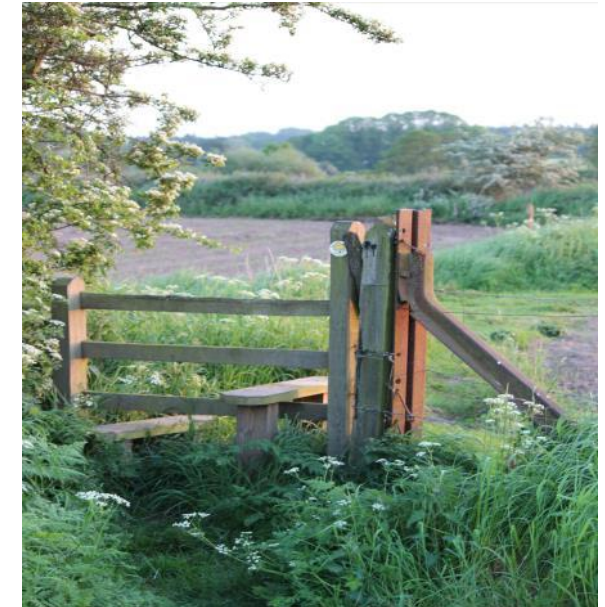


Photo. A Underwood

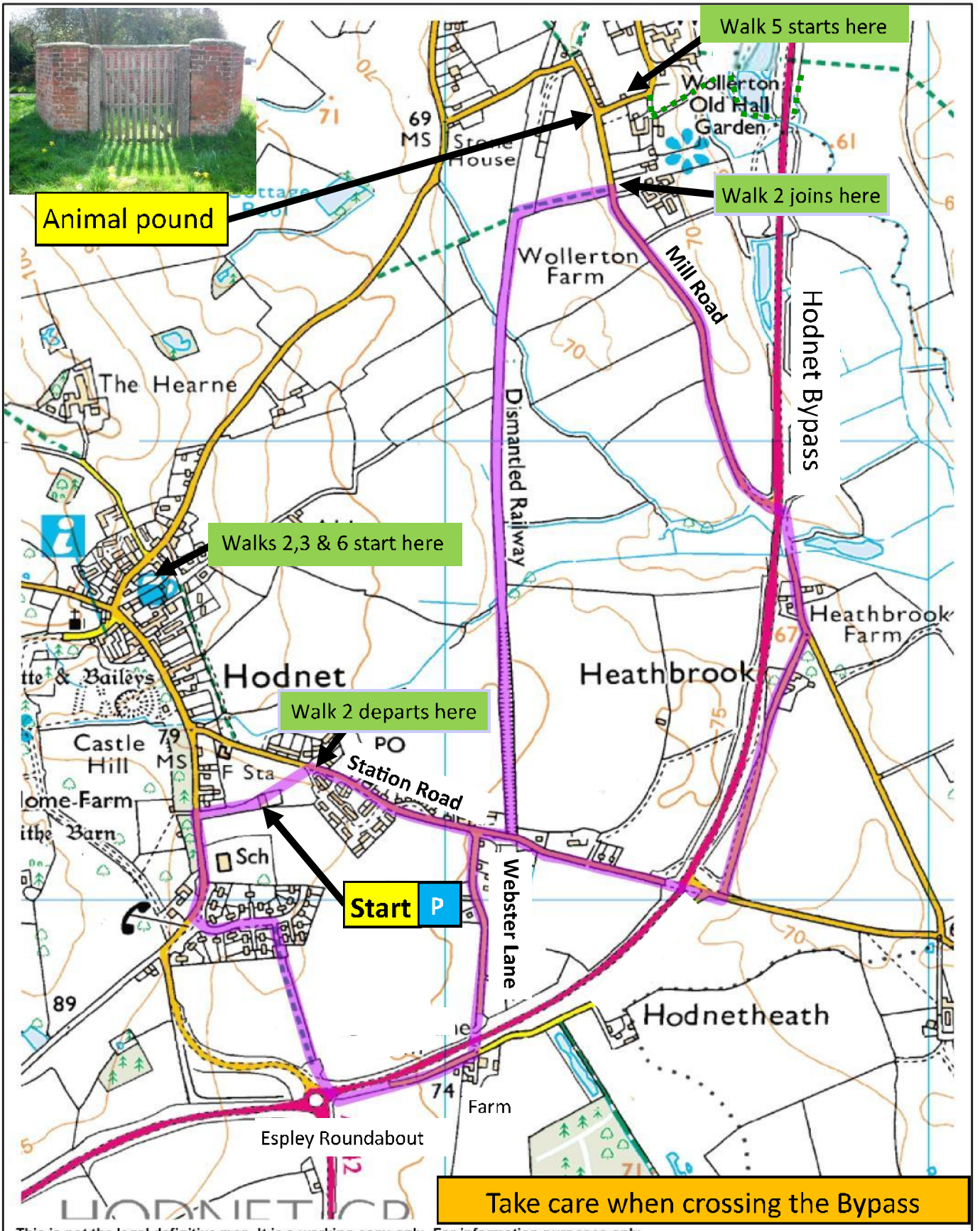
Distance? Approx 2, 3 or 4 miles

Time? 1 to 2 hours

Fitness Level? Easy

Stiles? A few after the old railway line

Dog Friendly? Yes



Walk 1 route marked: —————

Public footpaths shown as: - - - - -