

## Outline of the route

As a simple 'out and back' route, the 1st part of this walk provides a short country walk to Long Lane; but via its 2nd part provides a circular walk passing through Wollerton.

It starts at the Lyon Hall 's car park (free parking).

Cross Drayton Road and head up Hearne Lane past the Highways Depot, then look for a stile on the right. Cross it and pass several pools to reach another stile, after which you join a farm track. Look back now for a good view of 'The Portico', which was erected in memory of Brig. Heber-Percy, who created Hodnet Hall Gardens. Follow the track and you will soon enjoy elevated views of the **North Shropshire countryside**. Further on, leave the track to cross a field and a stile, and you arrive at Long Lane. You can now return the way you came or turn right and walk along (the quiet) Long Lane towards Wollerton.

At Wollerton cross the main road (by the former Squirrel Pub), and either follow the footpath (dogs may need help over some stiles) or walk around the village. Either way, you will soon reach an unusual old brick **Stray Animal Pound**. From there walk down Mill Road to **Wollerton Old Hall Garden**, then take the footpath to join the old railway line to Hodnet. At the end of the line turn right up Station Road and, via the recreation ground path, reach the Fire Station. You can return to the start via the field footpath opposite or use the village's roadside pavements instead.

## Welcome to Hodnet

This leaflet is one of a series intended to help visitors and residents walk some local paths, highlighting features of interest en-route. Some walks connect to others—see maps.

If visiting, please consider supporting some of our local businesses and visitor attractions see [www.hodnet.org.uk](http://www.hodnet.org.uk) for details. Details of other walks, and information on Hodnet Footpath Group, can be found at [www.hodnet.org.uk/fpg](http://www.hodnet.org.uk/fpg)

When out walking, may we remind you to:

**Close gates after use**

**Not leave litter**

**Keep dogs on a lead near livestock, and clean up after them—dog faeces can spread diseases**  
(Dog bins at Lyon Hall and each end of old Railway Line)

Produced with assistance from Shropshire Council and the Shropshire Housing Group Community Fund



## Hodnet Walks : 2

### Hodnet North Circular

'Long Lane Walk'

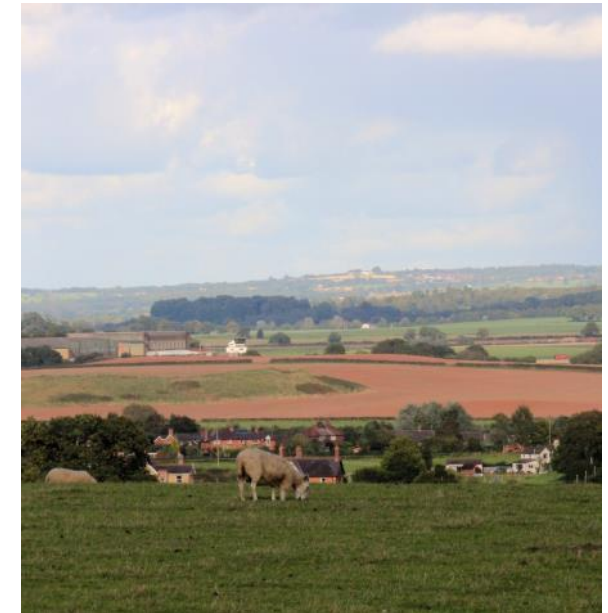


Photo. A Underwood

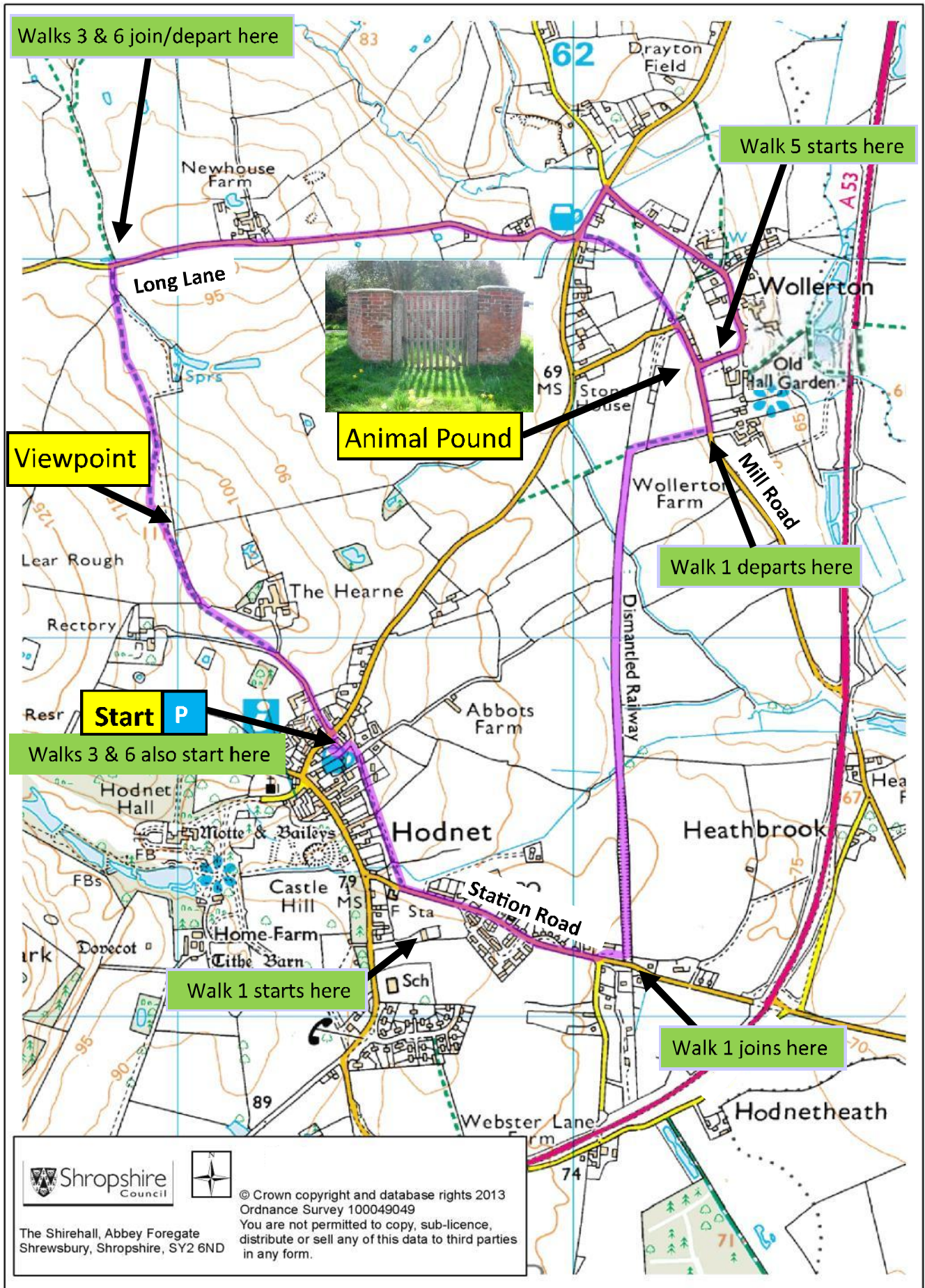
Distance? Approx 2 or 4 miles

Time? 1 to 2 hours



Fitness Level? Easy/Moderate

Stiles? Some

Dog Friendly? May need help over some stiles (2nd part)



Walk 2 route marked:  Public footpaths shown as:



 © Crown copyright and database rights 2013  
 Ordnance Survey 100049049  
 You are not permitted to copy, sub-licence,  
 distribute or sell any of this data to third parties  
 in any form.

The Shirehall, Abbey Foregate  
 Shrewsbury, Shropshire, SY2 6ND