

Outline of the route

As a simple 'out and back' route, this walk links Hodnet and Marchamley; but via its 2nd part provides a circular walk. It starts at the Lyon Hall's car park (free parking).

Leave the car park via the rear steps and turn right. Walk to the Bear Inn, cross Drayton Road and then head uphill towards Marchamley on the roadside pavement. After you've passed **St Luke's Church** and **Hodnet Hall** on your left, the pavement swaps sides at a road junction. Further up the hill you cross the road again and join a permissive path (on the field side of the hedge) with far-reaching **views** as you near Marchamley. From Marchamley you can return the way you came, or follow a circular route to Hodnet via (the quiet) Long Lane and field paths.

To reach Long Lane take the pavement passing through the village and then, for a short distance (approx 100m), walk on the road—take care, before turning right. After the **viewpoint** walk downhill for about 3/4 mile, then turn right onto a track between hedges. Cross a stile into a field and head towards the end of a copse on your left. Here you join a farm track heading towards Hodnet via another **viewpoint**. Before you reach The Hearne (farm) gate, bear right to cross a stile into a field. Walk down the field, passing some pools on your left, then cross a final stile to join Hearne Lane. Walk down the lane to its end, where you will see the Lyon Hall, and its car park, ahead.

Welcome to Hodnet

This leaflet is one of a series intended to help visitors and residents walk some local paths, highlighting features of interest en-route. Some walks connect to others—see maps.

If visiting, please consider supporting some of our local businesses and visitor attractions see www.hodnet.org.uk for details. Details of other walks, and information on Hodnet Footpath Group, can be found at www.hodnet.org.uk/fpg

When out walking, may we remind you to:

Close gates after use

Not leave litter

Keep dogs on a lead near livestock, and clean up after them—dog faeces can spread diseases
(Dog bin at Lyon Hall car park)

Produced with assistance from Shropshire Council and the Shropshire Housing Group Community Fund



Hodnet Walks : 3

Hodnet to Marchamley

'Permissive Path Walk'

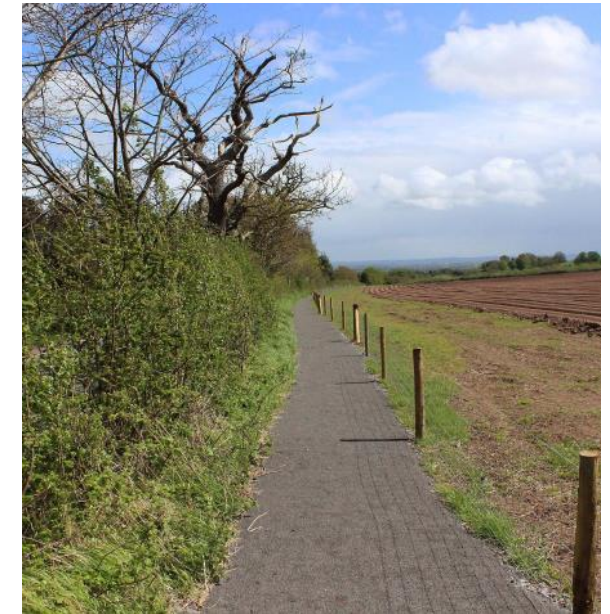


Photo. A Underwood

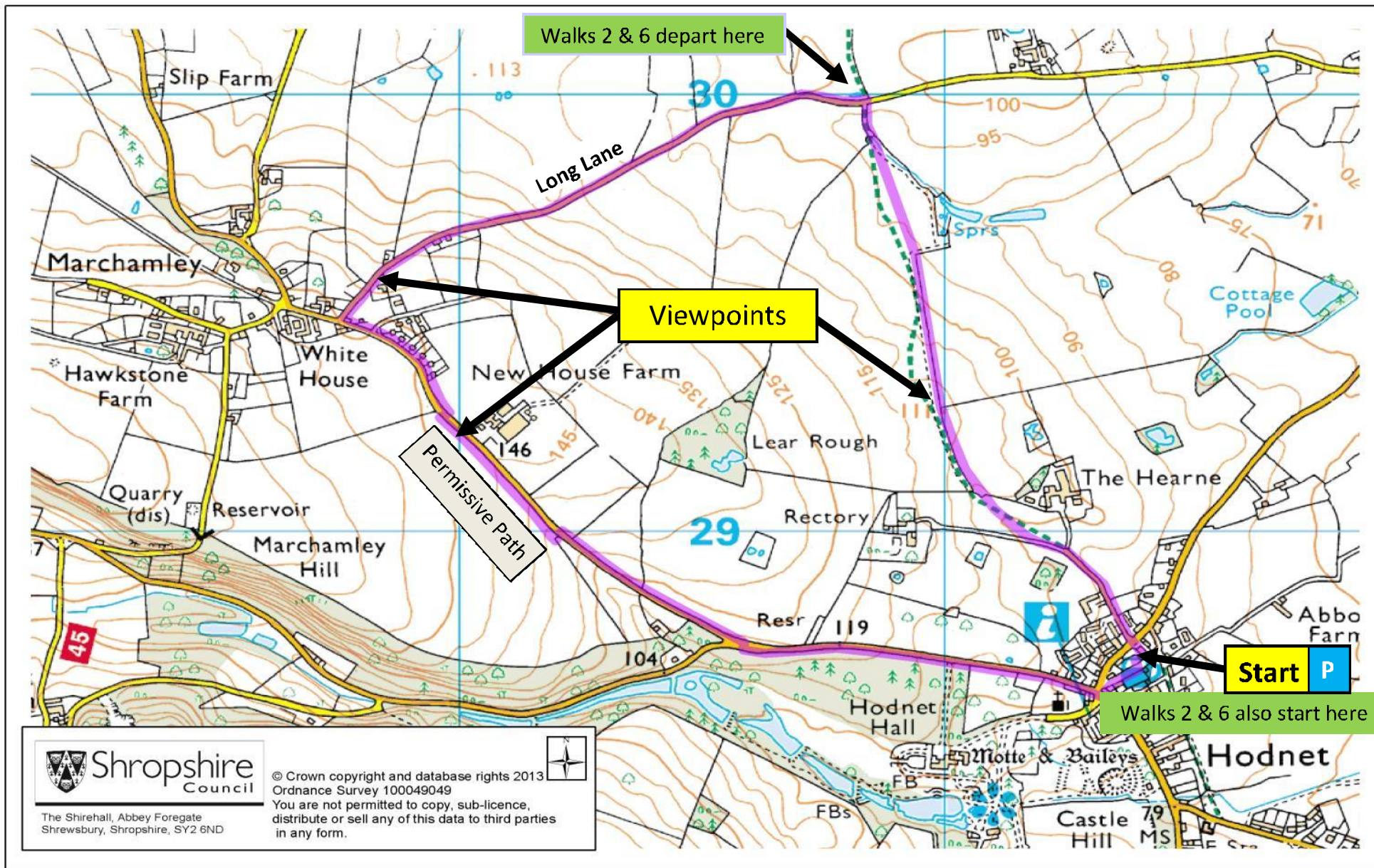
Distance? Approx 2.5 or 3 miles

Time? 1.5 to 2 hours

Fitness Level? Easy/Moderate

Stiles? None on 1st part, some on remainder

Dog Friendly? Yes



Walk 3 route marked: —————

Public footpaths shown as: - - - - -