

## Outline of the route

This walk follows a circular route through fields and quiet lanes, with far-reaching views in many directions. It starts at the 'Old Club' in High Hatton (roadside parking).

To start, cross a ST and walk diagonally right across a field to a hedge, then cross a ST and turn right. After passing an electricity pole enter the next field and head diagonally left towards a large tree near the far corner. Here a ST leads to a lane where you turn left and walk towards the A442, passing the site of the former **Peplow Station at Radmoor** on the way. Cross the A442 and follow the lane ahead, then turn left at a 'T' junction to pass Bowling Green Farm. Now look for a finger post (on the right hand verge) which points left into a field. Keeping a hedge on your left walk back to the A442, cross it and walk towards Hawgreen Farm. Just before the farm turn left (past a pool) and cross two small fields via two ST then turn right. Keeping a fence on your right walk to a ST/BR and then cross a field into another. Keeping a hedge on your left walk back to the village and enjoy a **Viewpoint** of the **Hawkstone Hills**. A PG leads into the last field before the village, then go through a PG and down a driveway. At the end of the driveway turn left and return to the start.

**Option.** At point 'A' on the map turn right then left down a track with a **Viewpoint** of **The Wrekin & High Hatton Hall**. The track soon becomes a path and, ignoring a way marker pointing right, go straight ahead to a PG+BR+PG. Cross a field to a PG leading onto Greenhurst Lane, turn left and, at end of the lane, turn left again to head back to the start.

## Welcome to Hodnet

This leaflet is one of a series created by Hodnet Footpath Group (HFG) to encourage use/enjoyment of local walks.

### Notes.

- 1/ The maps & route outlines are complementary, so should be used together for the clearest route guidance.
- 2/ For a key to abbreviations/symbols/terms used, see map.
- 3/ To learn more about HFG, view/download more walk leaflets or to report an issue visit [www.hodnet.org.uk/fpg](http://www.hodnet.org.uk/fpg)

When visiting the area, please consider supporting some of our local businesses and visitor attractions, see [www.hodnet.org.uk](http://www.hodnet.org.uk) for more details.

### Country Code—Please:

- Leave gates as you find them
- Take your litter home
- Keep dogs on a lead near livestock and clean up after them - **dog faeces can spread diseases!**



Map courtesy of Shropshire Council—no reproduction without permission. Printing sponsored by 'Everybody Active' (NHS Healthy Shropshire), the Shropshire Rural Communities Charity and Hodnet Parish Council.



# Hodnet Walks : 8

## High Hatton to Hodnet Heath

'Hawgreen Walk'

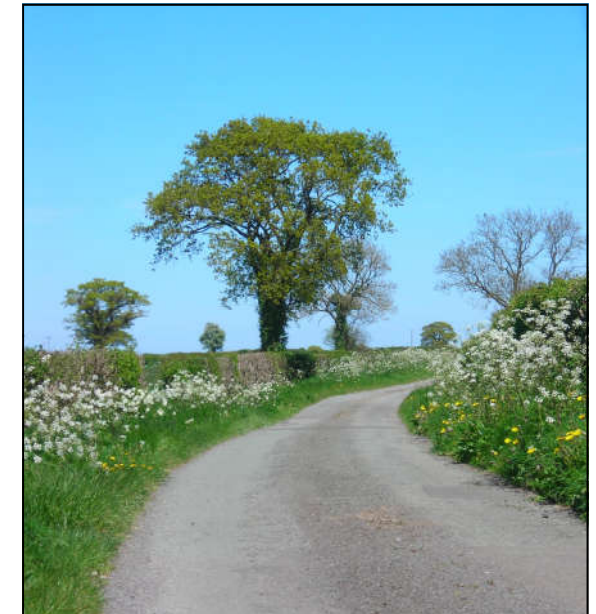
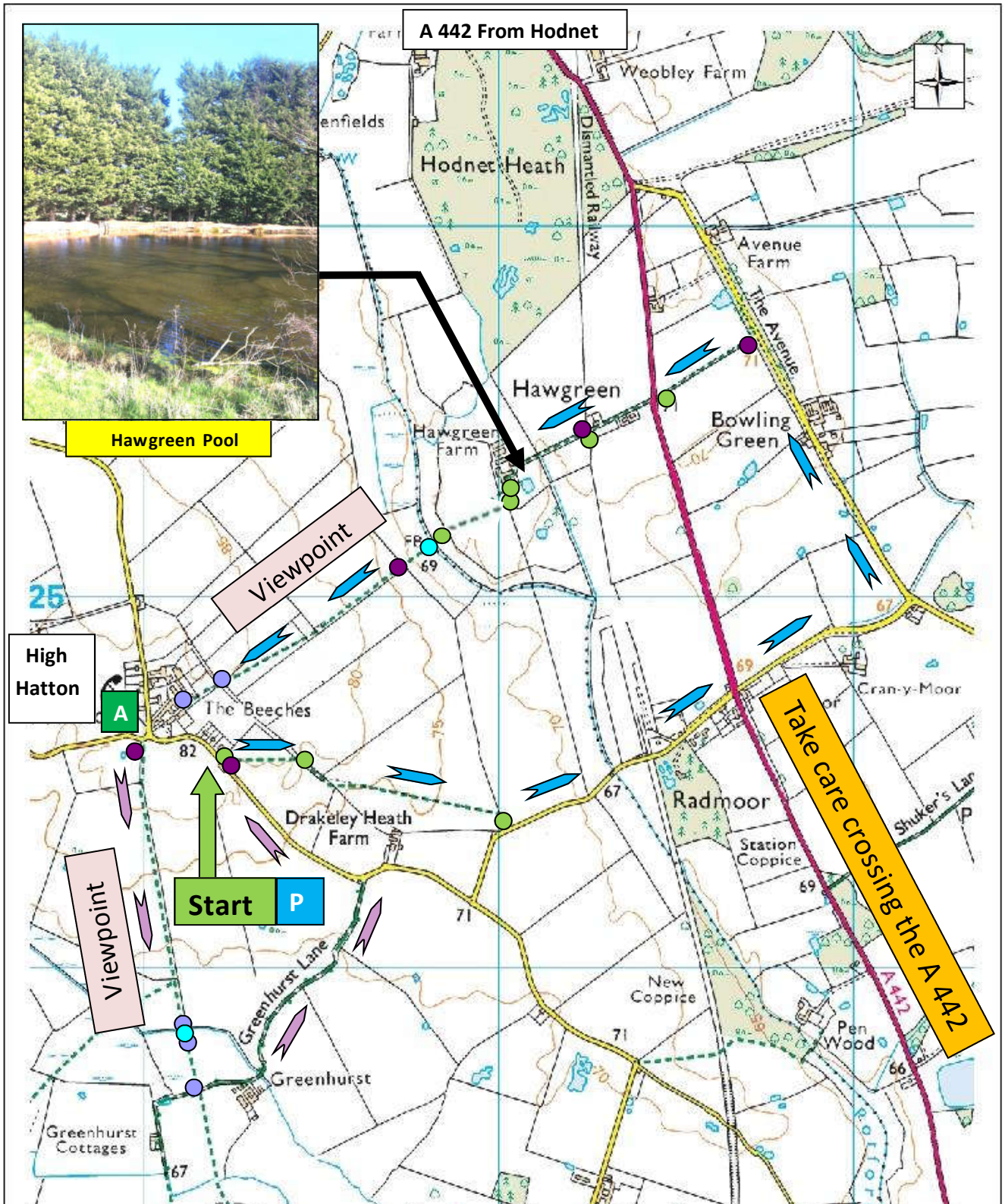


Photo. R Underwood

**Walk Type: Circular**  
**Distance : Approx 3.5 or 5 miles**  
**Walk Grade: 2**  
**Dog Friendly: Yes**  
**Time: 1.5–3 hours**



**Abbreviations/Symbols/Terms used in leaflet & map:**

Route =

Field Gate = FG or Pedestrian Gate = PG or Bridge = BR or

Stile = ST or 'Dog Friendly' Stile = Alternative route =

Dog Friendly = Larger dogs can get through/past the stile Public Footpath =

Walk Grades = **Grade 1:** Shorter/level route &/or no or few stiles **Grade 2:** Moderate length/part hilly route &/or some stiles **Grade 3:** Longer/hilly route &/or many stiles