

Outline of the route

This walk goes around the **Wollerton Wetlands**, with an option to go to **Stoke Heath**. It starts at Wollerton's Village Room (roadside parking).

To start, walk down Old Yard's drive and take a PG on the left down 'Cow Lane'. After 2 PG you enter a field by **Wollerton Mill** (now a private house). Cross the field to a PG+BR over the **River Tern**, then turn left to follow a path around the **Wetlands**—home to many types of **Plants, Insects, Fish, Birds** and other **Animals**.

At 'A', if not going on towards Stoke Heath, turn right along the river bank to the BR, then return to the start.

Option: At 'A' go under the bypass BR and through two PG to enter a field, where you turn left.

Note. *From this point the official footpaths have not always been well marked/maintained. If you do encounter problems we suggest that you follow the alternative routes shown on the map.*

Head towards a pool, then turn right across the field to reach a farm track. Go into a field on right (gap in the hedge) then walk diagonally left up to the 'Gallops'. Cross them and enjoy a **Viewpoint** of the **Tern Valley**, then head diagonally left again to a ST onto a track. Now go up the bank ahead and follow the field edge to a track at the top. Here, turn right then left (gap in the hedge) to a series of ST that cross horse paddocks in front of Helshaw Grange. On arrival, turn left and go up the drive, where 2 close ST on the right take you over fields (past a copse on the left) to a ST onto Chapel Lane.

Welcome to Hodnet

This leaflet is one of a series created by Hodnet Footpath Group (HFG) to encourage use/enjoyment of local walks.

Notes.

- 1/ The maps and route outlines are complementary, so should be used together for the clearest route guidance.
- 2/ For a key to abbreviations/symbols/terms used, see map.
- 3/ If you find a route blocked (e.g. by growing crops) take the shortest alternative route past/around the problem.
- 4/ To learn about HFG, download more walk leaflets (we've 10 of them) or to report an issue visit www.hodnet.org.uk/fpg

When visiting the area, please consider supporting some of our local businesses and visitor attractions, see www.hodnet.org.uk for more details.

Country Code

- Leave gates and property as you find them
- Don't leave litter
- Keep dogs under control and in sight (use a lead near livestock), and clean up after them - **dog faeces spread diseases!**



Map courtesy of Shropshire Council—no reproduction without permission.

With special thanks to sponsors of our leaflet printing:

Community Resource - www.community-resource.org.uk

Hodnet Parish Council - www.hodnet.org.uk

The Bear Inn - www.thebearinnhodnet.com

Hodnet Village Store & Post Office - on Facebook

Americold, Whitchurch - www.americold.com

Hodnet Walks : 5

Wollerton to Stoke Heath

'Wetlands Walk'



Photo. A Underwood

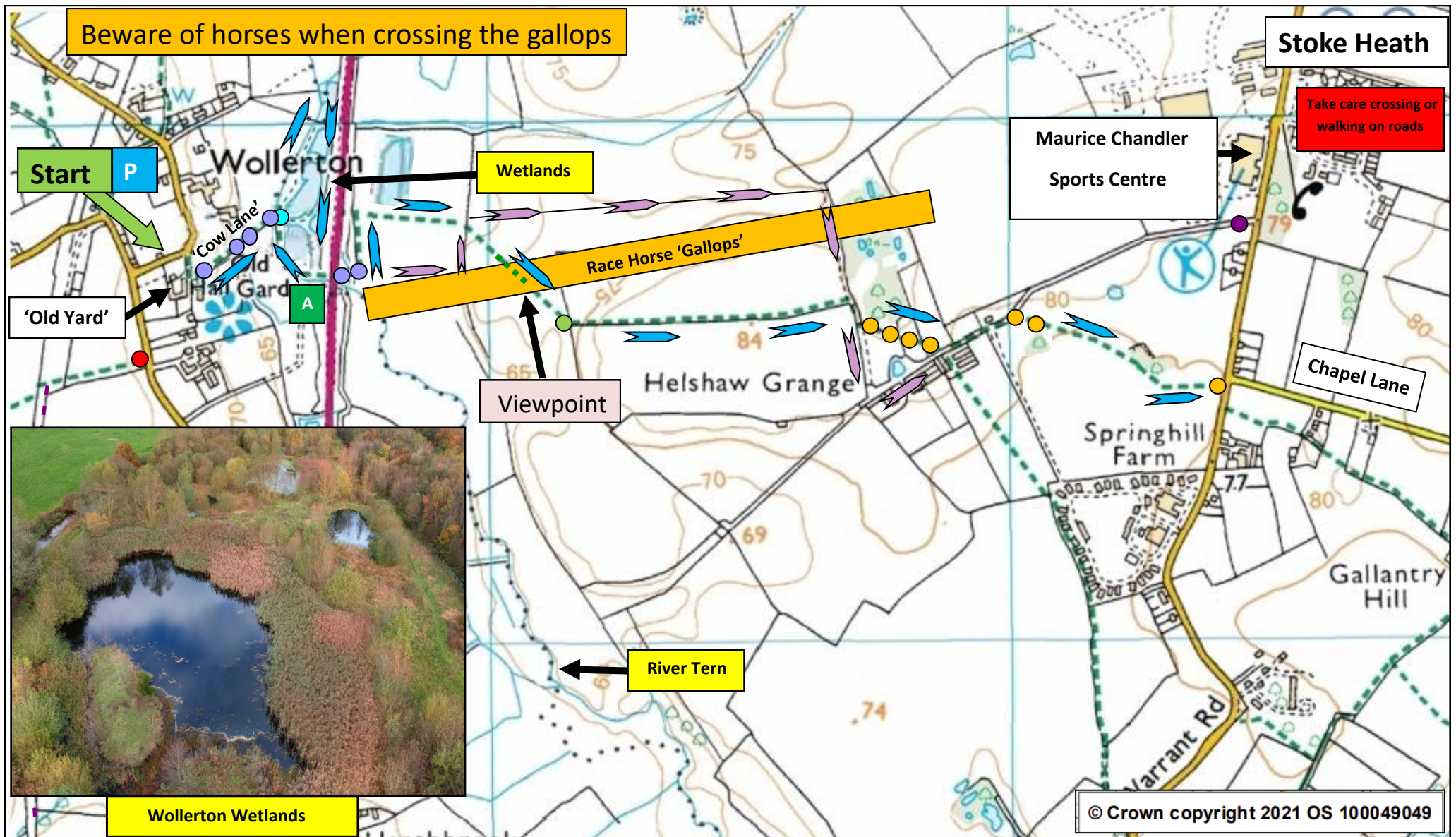
Walk Type: Circular (1st part) or Linear

Distance: Approx 1 or 4 miles

Walk Grade: 2

Dog Friendly: 1st part

Time: 1–2 hours.



Abbreviations/Symbols/Terms used in leaflet & map:

- Route = Alternative route = Public Footpath =
- Field Gate = FG or Pedestrian Gate = PG or Bridge = BR or Dog Bin = Stile = ST or 'Dog Friendly' Stile =
- Dog Friendly = Larger dogs can get through/past the stile
- Grade 2: Moderate length/part hilly route &/or some stiles
- Walk Grades = **Grade 1:** Shorter/level route &/or no or few stiles
Grade 3: Longer/hilly route &/or many stiles