

Outline of the route

This walk, using quiet lanes and fields, starts at some roadside (on verge) parking—but don't block the FG!

To start, head towards Radmoor—passing the site of the former **Peplow Station** on the way. Cross the A442 and follow the lane ahead, then turn left at a 'T' junction. After Bowling Green look for a finger post on the right—which points left into a field. Enter the field and, keeping a hedge on your left, head again to the A442 and cross it. Now go up the drive to Hawgreen Farm, but just before it turn left (past a pool) and cross two ST. Turn right and, keeping a fence on your right, head to and cross a BR. Go straight ahead to enter a large field where, keeping a hedge on your left, there's a **Viewpoint** of the **Hawkstone Hills**.

After the next field go through two PG and down a drive, past some converted barns, to reach 'A'.

If not extending your walk, turn left to pass some houses and then look for a ST on the left, which you cross.

Note. *The farmer may spray out an easier path across crops in the next two fields (back to the start). If so, we suggest you follow it.*

Head diagonally right to another ST, then turn right. A gap leads into the next field, where (by an oak tree) you turn left then head diagonally right to a ST. Don't cross it, but turn right and walk down the hedge to a PG by the start.

Option. At 'A' head left down a track to a **Viewpoint** of **The Wrekin & High Hatton Hall**. The track soon becomes a path and you'll reach a BR+PG. Now cross a field to a PG onto Greenhurst Lane. Turn left, then at the end of the lane turn right. Shortly afterwards turn left to reach the start.

Welcome to Hodnet

This leaflet is one of a series created by Hodnet Footpath Group (HFG) to encourage use/enjoyment of local walks.

Notes.

- 1/ The maps and route outlines are complementary, so should be used together for the clearest route guidance.
- 2/ For a key to abbreviations/symbols/terms used, see map.
- 3/ If you find a route blocked (e.g. by growing crops) take the shortest alternative route past/around the problem.
- 4/ To learn about HFG, download more walk leaflets (we've 10 of them) or to report an issue visit www.hodnet.org.uk/fpg

When visiting the area, please consider supporting some of our local businesses and visitor attractions, see www.hodnet.org.uk for more details.

Country Code

- Leave gates and property as you find them
- Don't leave litter
- Keep dogs under control and in sight (use a lead near livestock), and clean up after them - **dog faeces spread diseases!**



Map courtesy of Shropshire Council—no reproduction without permission.

With special thanks to sponsors of our leaflet printing:

Community Resource - www.community-resource.org.uk
Hodnet Parish Council - www.hodnet.org.uk
The Bear Inn - www.thebearinnhodnet.com
Hodnet Village Store & Post Office - on Facebook
Americold, Whitchurch - www.americold.com

Hodnet Walks : 8

Around High Hatton

'Hawgreen Walk'



Photo. R Underwood

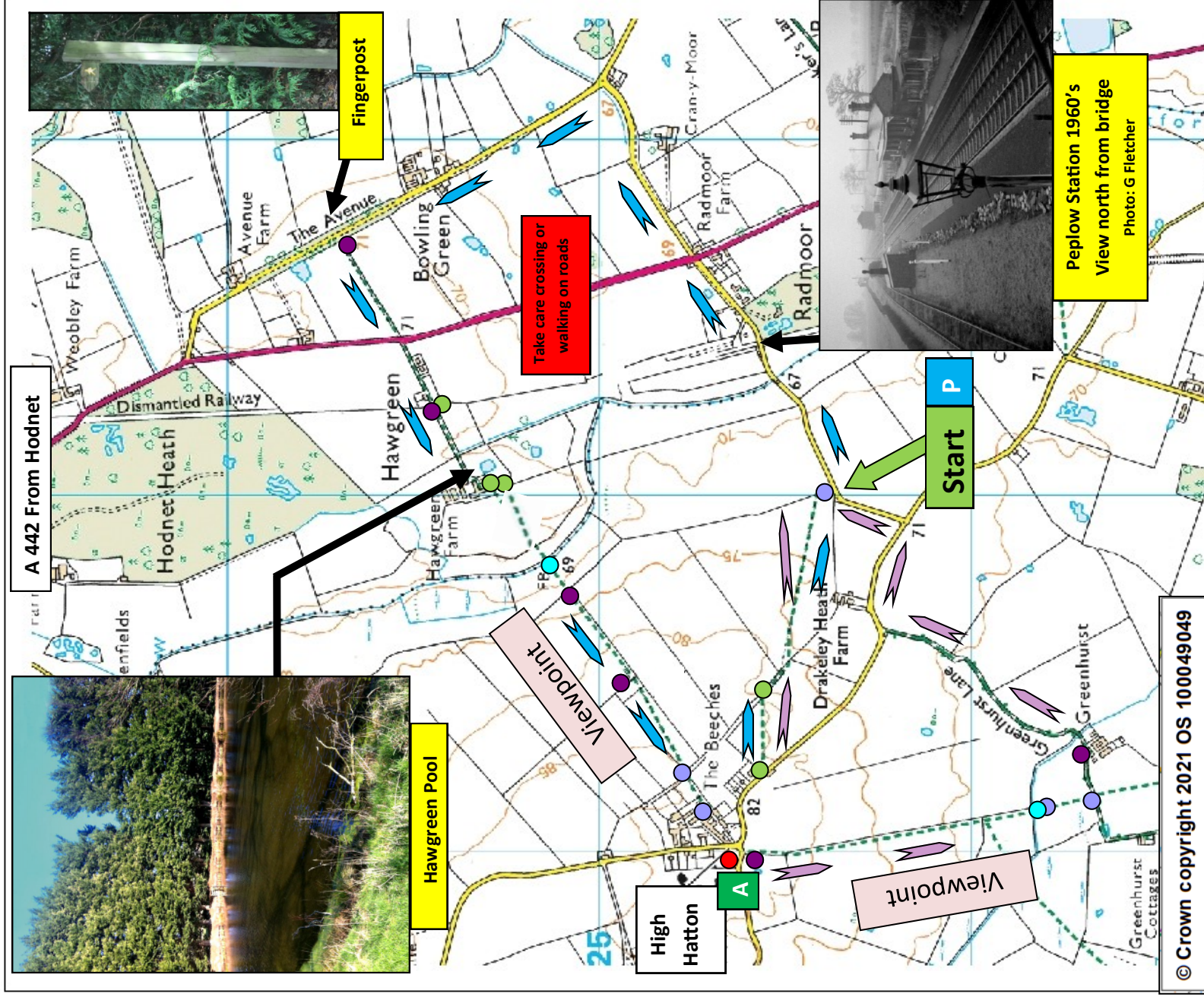
Walk Type: Circular

Distance : Approx 3.5 or 5 miles

Walk Grade: 2

Dog Friendly: Yes

Time: 1.5–3 hours



Abbreviations/Symbols/Terms used in leaflet & map:

Route =	
Field Gate = FG or	Pedestrian Gate = PG or
Stile = ST or	'Dog Friendly' Stile =
Dog Friendly = Larger dogs can get through/past the stile	Public Footpath =

Field Gate = FG or Pedestrian Gate = PG or Bridge = BR or Dog Bin

Stile = ST or 'Dog Friendly' Stile = Alternative route =

Dog Friendly = Larger dogs can get through/past the stile Public Footpath =

Walk Grades = Grade 1: Shorter/level route &/or no or few stiles **Grade 2:** Moderate length/part hilly route &/or some stiles **Grade 3:** Longer/hilly route &/or many stiles